

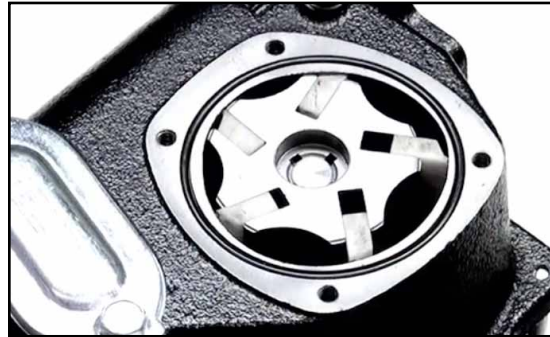
Applies to models:

- AFP-600 automatic fuel polishing system
- Diesel Fuel Service Cart
- VP-620 Series vane pump

1. Loosen screws in an even pattern.



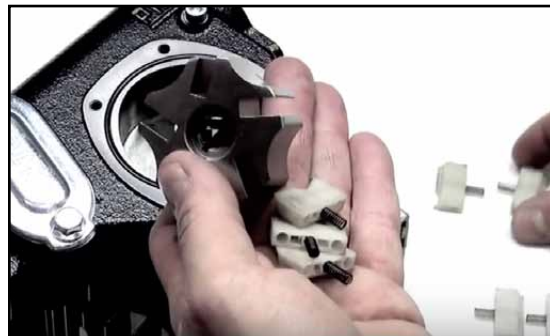
2. Remove the cover plate.



3. Using pliers, lift and remove the rotor.



4. Set aside the used vanes and springs.

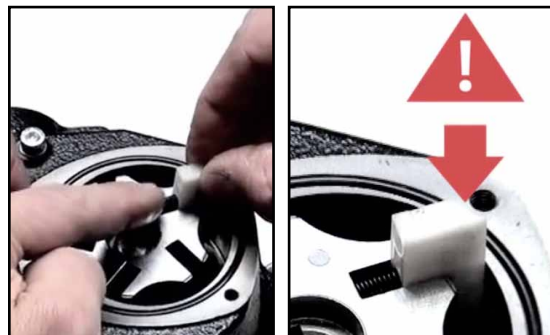


5. Place the rotor back into the pump head.



6. Slightly compress the spring to sit the first vane into place.

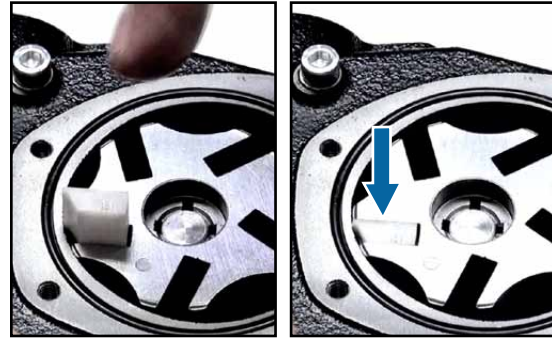
Do not push vane all the way down.



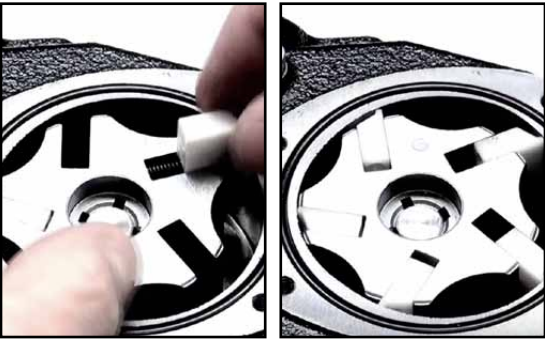
7. Turn the rotor about 180 degrees.



8. The vane will automatically sit further down. Then you can tap it the rest of the way.



9. Repeat procedure with the remaining 4 vanes.



10. Put cover plate back and tighten screws evenly.

