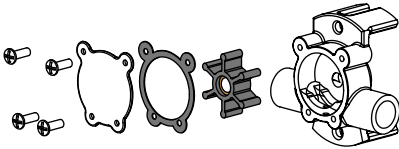


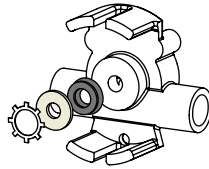
Impeller & Gasket Replacement

Replace the impeller after 500 hours of service. Impellers may require servicing earlier if the unit has been run dry, damaged by foreign object, or damaged by the use of incompatible fluids, prior to the 500 hours.



1. Remove the 4 screws securing the cover plate.
2. Remove cover plate and gasket.
3. Using your fingers, remove worn impeller.
4. Clean inside of pump head and remove any foreign materials which will obstruct impeller's operation.
5. Apply lubricant to inside of pump head and to outside diameter of the impeller.
6. Align the flat section inside of the new impeller with the flat section of the motor shaft.
7. Place new gasket on pump body face, align holes, and replace cover plate.
8. Replace 4 screws and tighten evenly.

Lip Seal, Felt Washer, & Retaining Ring Replacement



1. Remove the screws securing the pump head.
2. Remove old retaining ring, felt washer, and lip seal with flat head screwdriver.
3. Replace with new ones in the order shown above.
4. Press retaining ring inside with flat head screwdriver.
5. Return pump head back on the motor shaft and twist slowly until pump head fits on completely.
6. Replace the screws to secure pump head and tighten evenly.

www.reversopumps.com
contact@reversopumps.com
(954) 522-0882

REVERSO